



USAID | **ASIA**
FROM THE AMERICAN PEOPLE



Vulnerability Assessments & Resilience Planning In ACCCRN & Mekong-BRACE

Kenneth MacClune – ISET
ADB GMS EOC – Bangkok – 12 March, 2013



Outline

- Planning with Climate Change
 - Working with “Complex Adaptive Systems” within development
- The Climate Resilience Framework
 - Understanding Vulnerability
 - Understanding Actions
 - Shared Learning Dialogues
- CRF Modules & Training



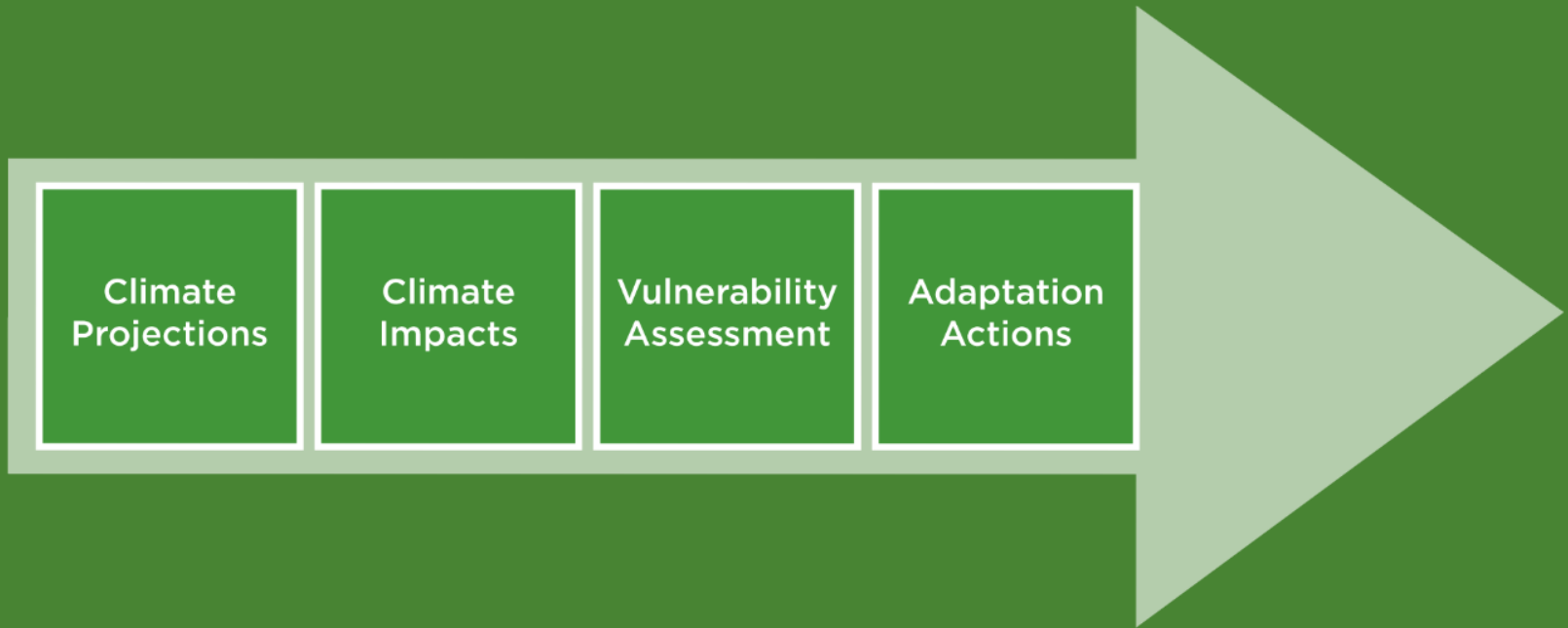
How do we plan for climate adaptation/ resilience?

- Need an approach that clarifies complex concepts
- Must be simple enough that it can be translated for local practitioners to apply in context

This approach applied in 14 cities as part of Asian Cities Climate Change Resilience Network (ACCCRN) and MBRACE

Standard “Linear” Approach

TYPICAL PLANNING FRAMEWORK





Challenges

- Difficulty obtaining/ interpreting climate projections & conveying uncertainties
- Scaling down & projecting extreme events adds further uncertainties
- Climate interacts with other systemic change processes
- Analysis tends to focus on direct impacts rather than systemic & cross scale issues



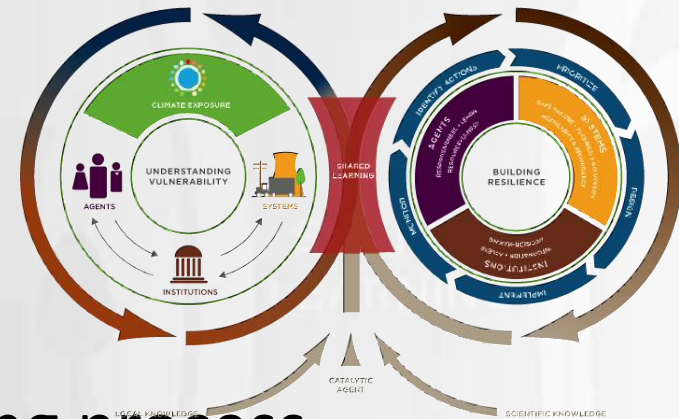
Data are often uncertain or missing

?	?	?	?
?	?	?	?
?	?	?	?
??	??	??	??



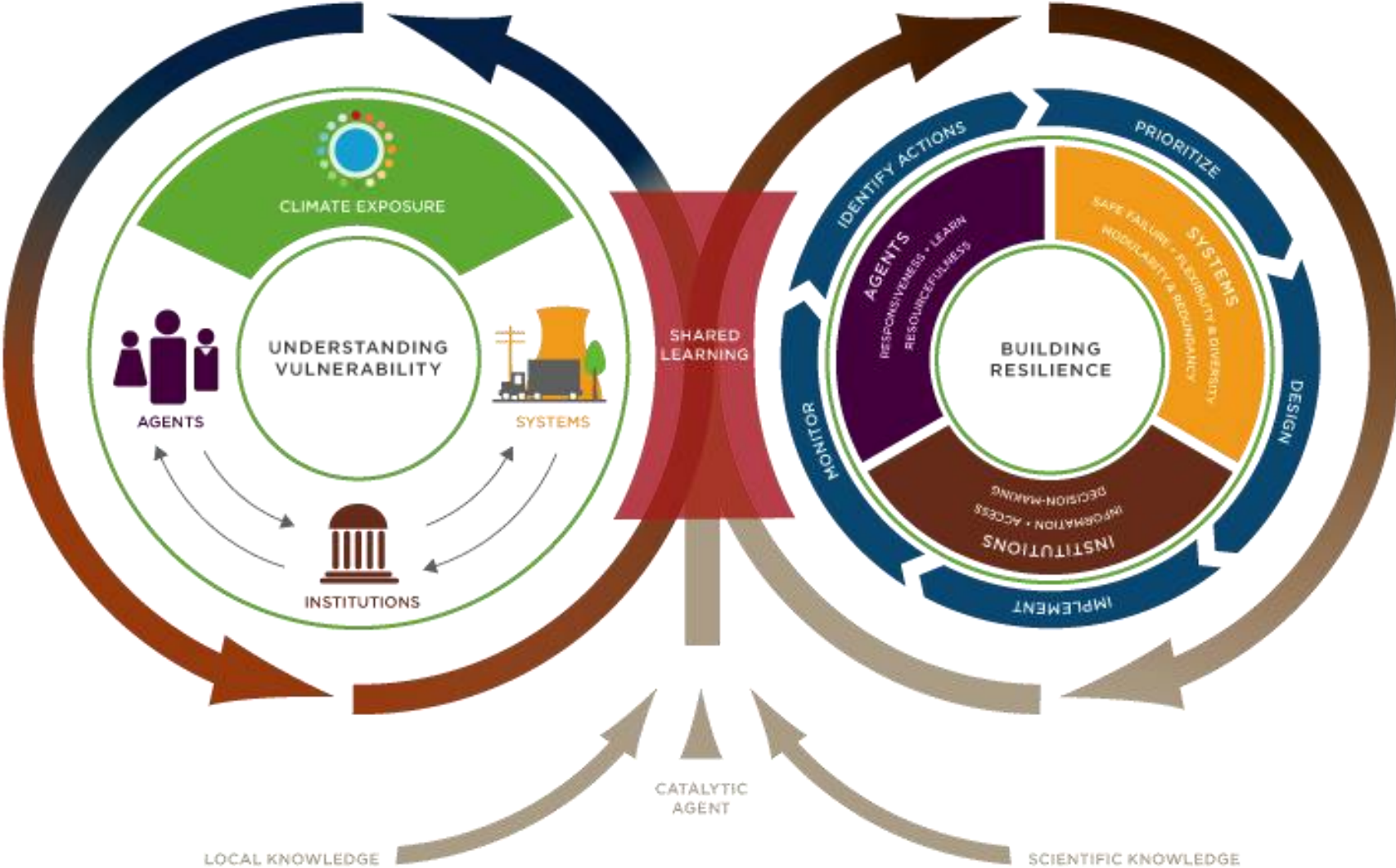
The Climate Resilience Framework

- Conceptual Framework for
 - assessing vulnerability and risk
 - Identifying resilience strategies
 - within an open, inclusive learning process



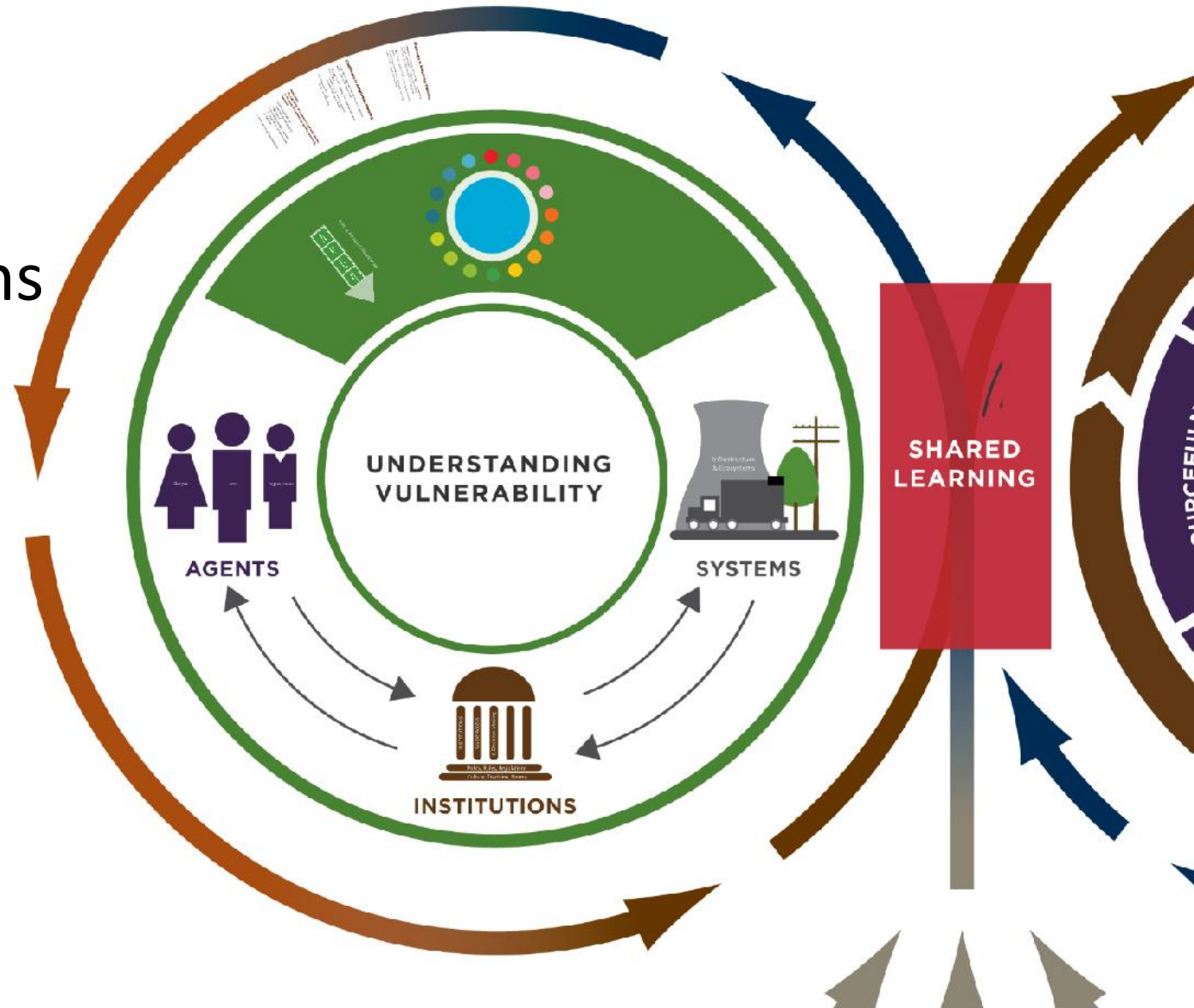
To address complexity and uncertainties of climate change through action and implementation.

Climate Resilience Framework

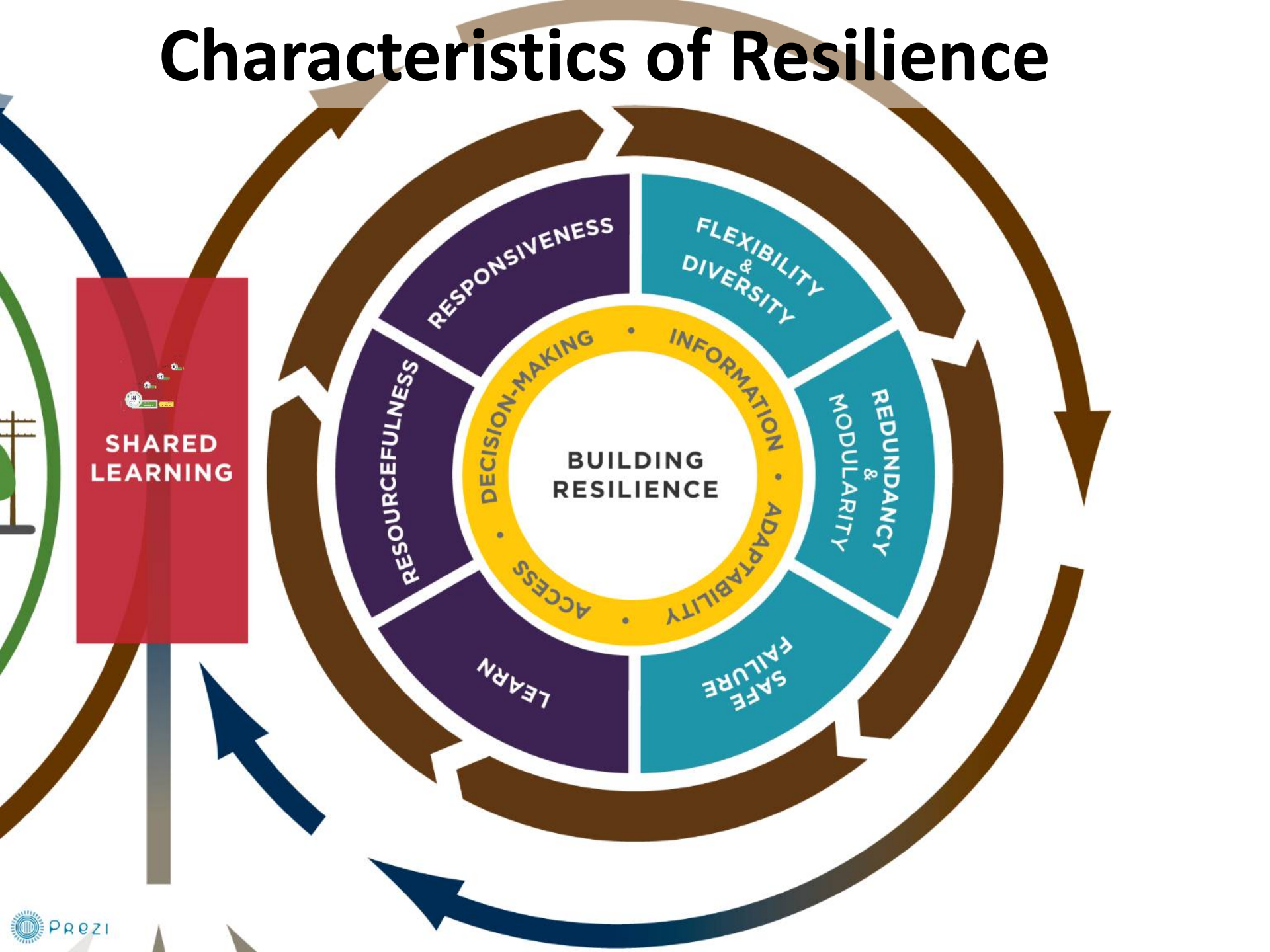


The Vulnerability Context: The Three Components of Resilience – Systems, Agents and Institutions

- Systems
- Agents
- Institutions



Characteristics of Resilience



Characteristics of Resilience

- Systems

- Flexibility & Diversity
- Redundancy & Modularity
- Safe Failure

- Agents

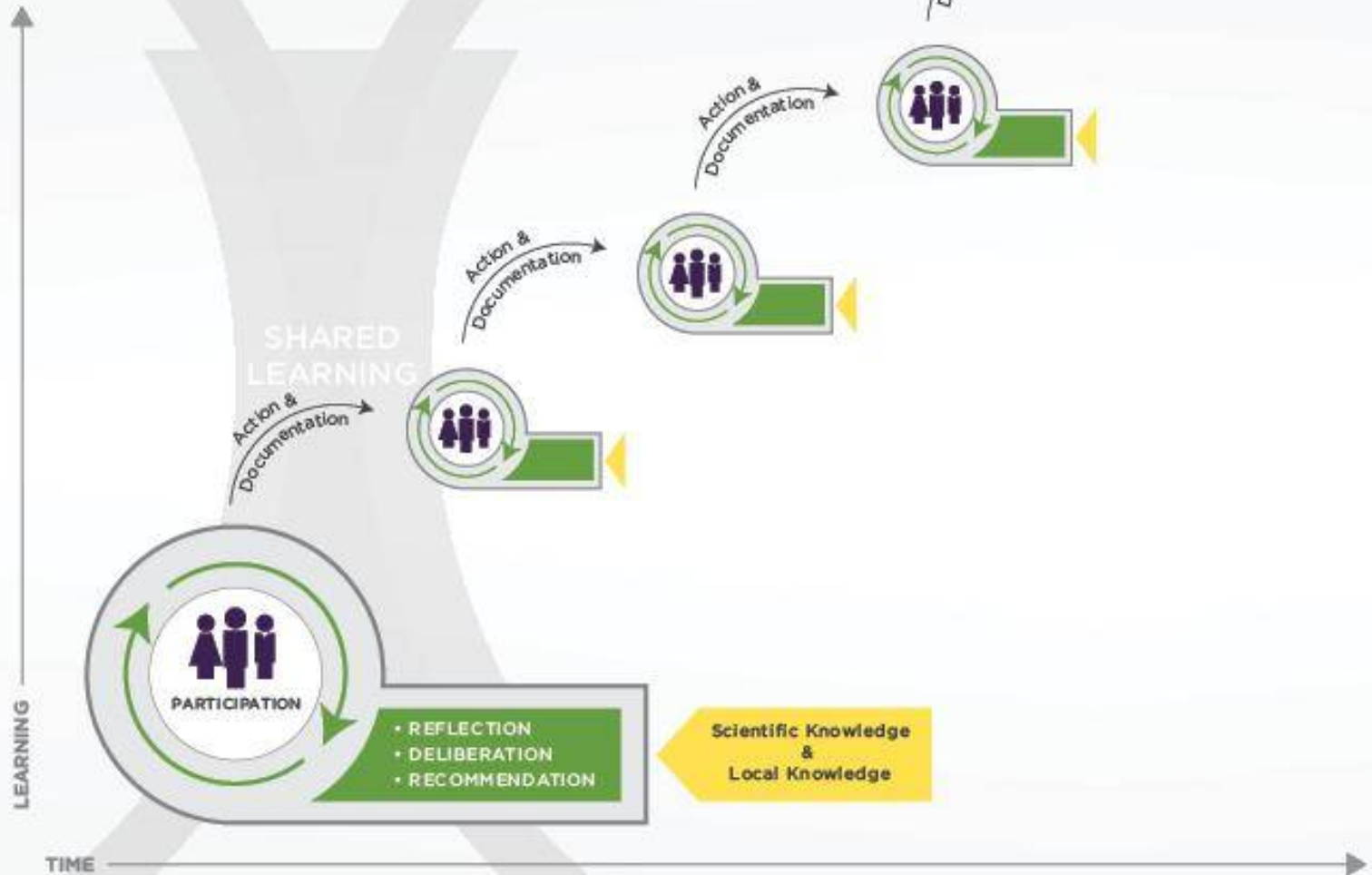
- Responsiveness
- Capacity to learn
- Resourcefulness

- Institutions

- Access
- Openness
- Information



Shared Learning Dialogue

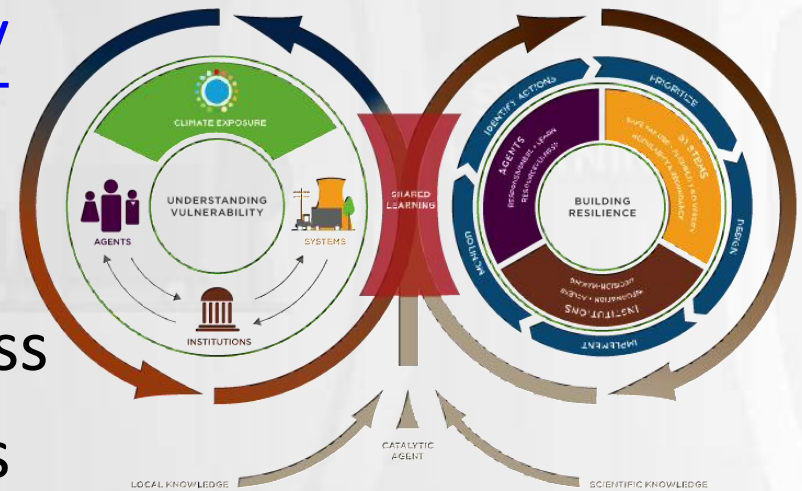


Climate Resilience Framework

Training and Use Modules

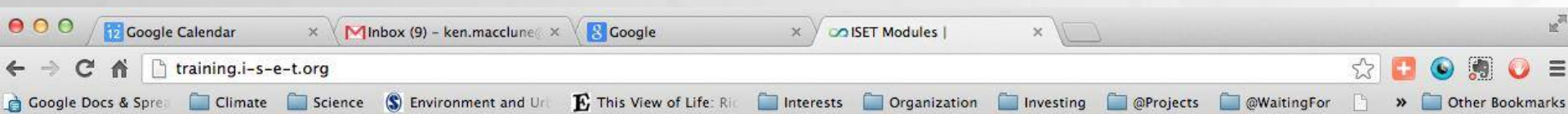
<http://training.i-s-e-t.org/>

- Preparing for the process
- Assessing Vulnerability
- Resilience Planning Process
- Benefits and Cost Analysis



Climate Resilience Framework Training and Use Modules

<http://training.i-s-e-t.org/>



HOME

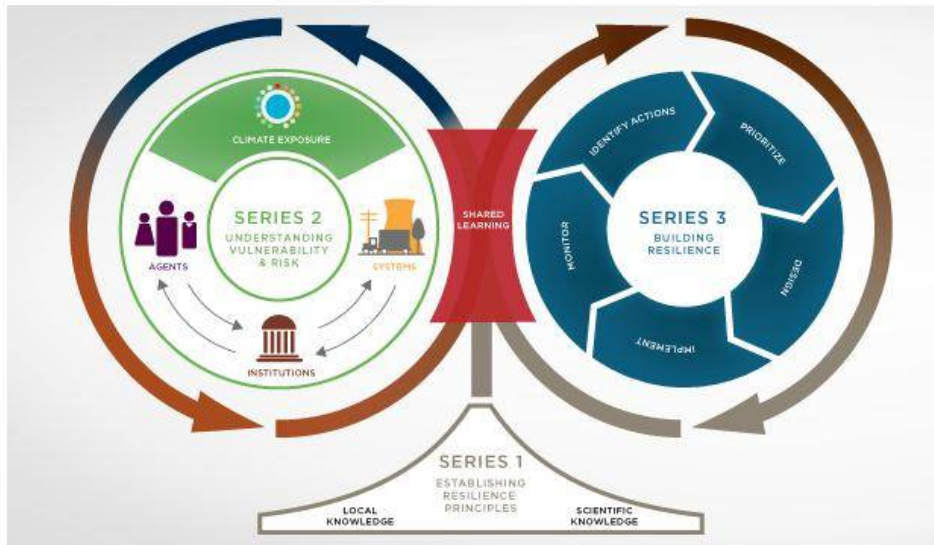
MODULES »

CASE STUDIES

TOOLS

ABOUT / FAQ

SEARCH



CLIMATE RESILIENCE FRAMEWORK

ISET-INTERNATIONAL

Overview of Training Materials

The Climate Resilience Framework is a conceptual framework for simplifying and analyzing complex relationships between people, systems, institutions and climate change. The framework helps clarify factors that need to be included in the diagnosis of climate vulnerability, structures the systematic analysis of vulnerability in ways that clearly identify the entry points for responding, and supports strategic planning to build resilience to climate change...

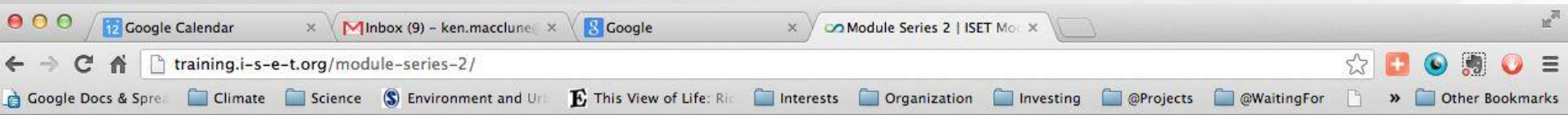
[Go to Overview of Training Materials](#)

Built with Hype

Welcome to the Climate Resilience Framework: Training Materials! This website is under development. New materials are being added monthly. Please check back regularly!

Climate Resilience Framework Training and Use Modules

<http://training.i-s-e-t.org/>



HOME MODULES» CASE STUDIES TOOLS ABOUT / FAQ SEARCH

INTRODUCTION TO SERIES 2: UNDERSTANDING VULNERABILITY & RISK

Intro TOC 2.0 2.1 2.2 2.3 2.4 2.5 2.6 2.7 2.8

UNDERSTANDING VULNERABILITY & RISK

Series 2 systematically walks the newly formed climate working group through some of the steps involved in conceptualizing, compiling, analyzing and utilizing an initial citywide vulnerability and climate risk study. This series is designed for a community and/or working group with little previous experience conducting climate vulnerability and risk assessments. However, communities that have conducted vulnerability and risk assessments previously will find that this module series contains tips that help re-evaluate previously collected data in a more systematic manner, allowing clear identification of gaps.

PREVIOUS

NEXT

The diagram shows three interconnected circular modules. Series 1, 'ESTABLISHING RESILIENCE PRINCIPLES', is at the bottom and includes 'LOCAL KNOWLEDGE' and 'SCIENTIFIC KNOWLEDGE'. Series 2, 'UNDERSTANDING VULNERABILITY & RISK', is on the left and includes 'CLIMATE EXPOSURE', 'AGENTS', 'SYSTEMS', and 'INSTITUTIONS'. Series 3, 'BUILDING RESILIENCE', is on the right and includes 'IDENTIFY ACTIONS', 'PRIORITY', 'MONITOR', and 'IMPLEMENT'. A central 'SHARED LEARNINGS' box connects the three series. Arrows indicate a flow from Series 1 to Series 2 and Series 3, and from Series 2 to Series 3. A download icon is located at the bottom center of the content area.

Climate Resilience Framework Training and Use Modules

<http://training.i-s-e-t.org/>

training.i-s-e-t.org/module-series-2/

CLIMATE RESILIENCE FRAMEWORK
ISET-INTERNATIONAL
BETA

HOME MODULES» CASE STUDIES TOOLS ABOUT / FAQ SEARCH

TABLE OF CONTENTS: UNDERSTANDING VULNERABILITY & RISK

Intro **TOC** 2.0 2.1 2.2 2.3 2.4 2.5 2.6 2.7 2.8

Set 2.0 Introduction to Assessing Vulnerability	Set 2.1 Defining Vulnerability & Risk	Set 2.2 Clarifying Your Vulnerability Framework	Set 2.3 Past, Present and Future	Set 2.4 Climate Change, Exposure and Risk
Download Set Introduction Activity 1 Case Study	Download Set Introduction Activity 1	Download Set Introduction Activity 1	Download Set Activity 1 Activity 2 Activity 3	Download Set Activity 1 Activity 2 Activity 3
Set 2.5 Baseline Vulnerability	Set 2.6 System Fragility	Set 2.7 Vulnerability and Governance	Set 2.8 Putting It All Together	
Download Set Activity 1 Activity 2	Coming Soon...	Coming Soon...	Coming Soon...	

PREVIOUS NEXT



Thank You

Ken MacClune ken@i-s-e-t.org

www.i-s-e-t.org