



GREATER MEKONG
SUBREGION
CORE ENVIRONMENT
PROGRAM

GMS Core Environment Program: Transboundary Biodiversity Landscapes

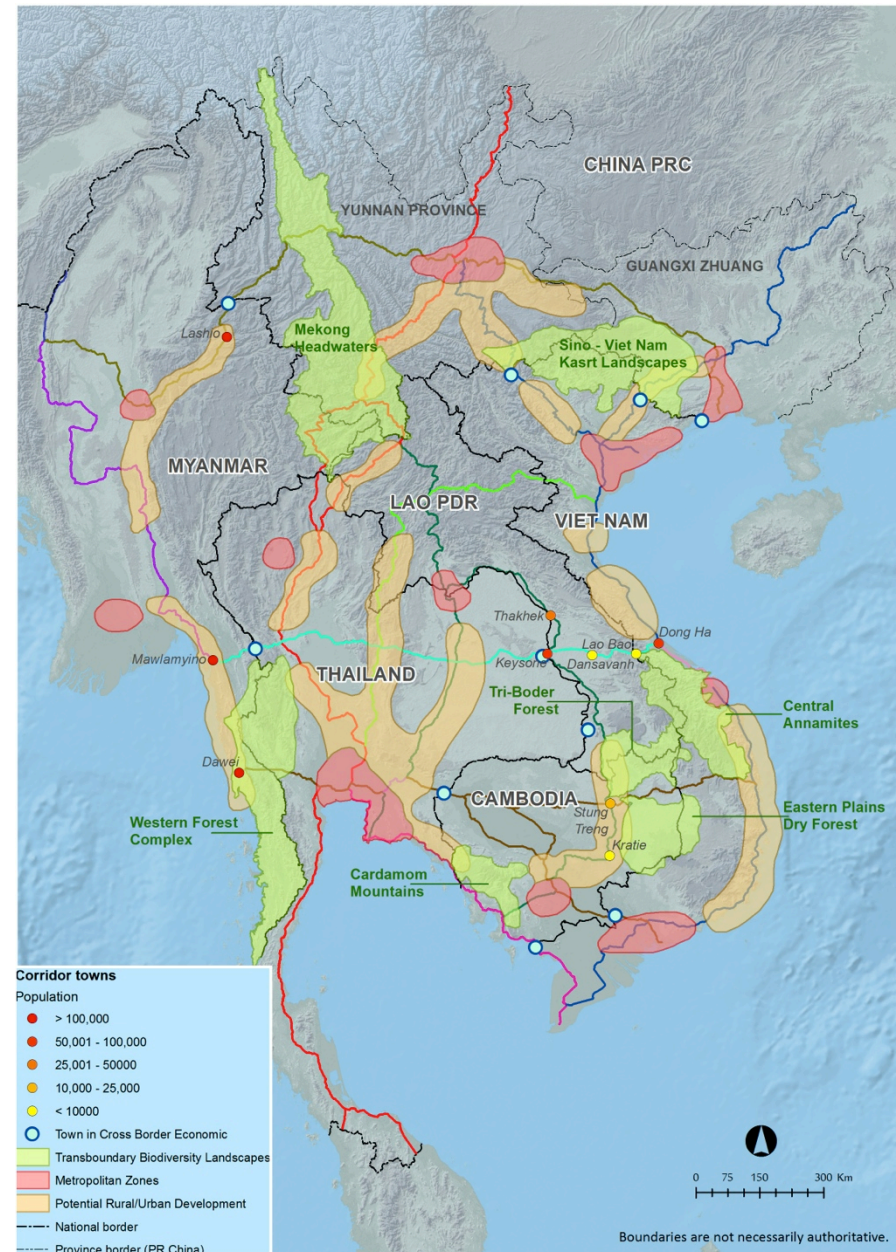


Michael J.B. Green: Technical Program Head
GMS Environment Operations Center



GMS context

- CEP is regional program led by Working Group on Environment (GMS environment ministries), supported by ADB as part of GMS ECP.
- Co-financed by Governments of Finland, Sweden and Nordic Development Fund.
- Budget US\$ 28.4 M
- Duration 2012 - 2016





GMS vision

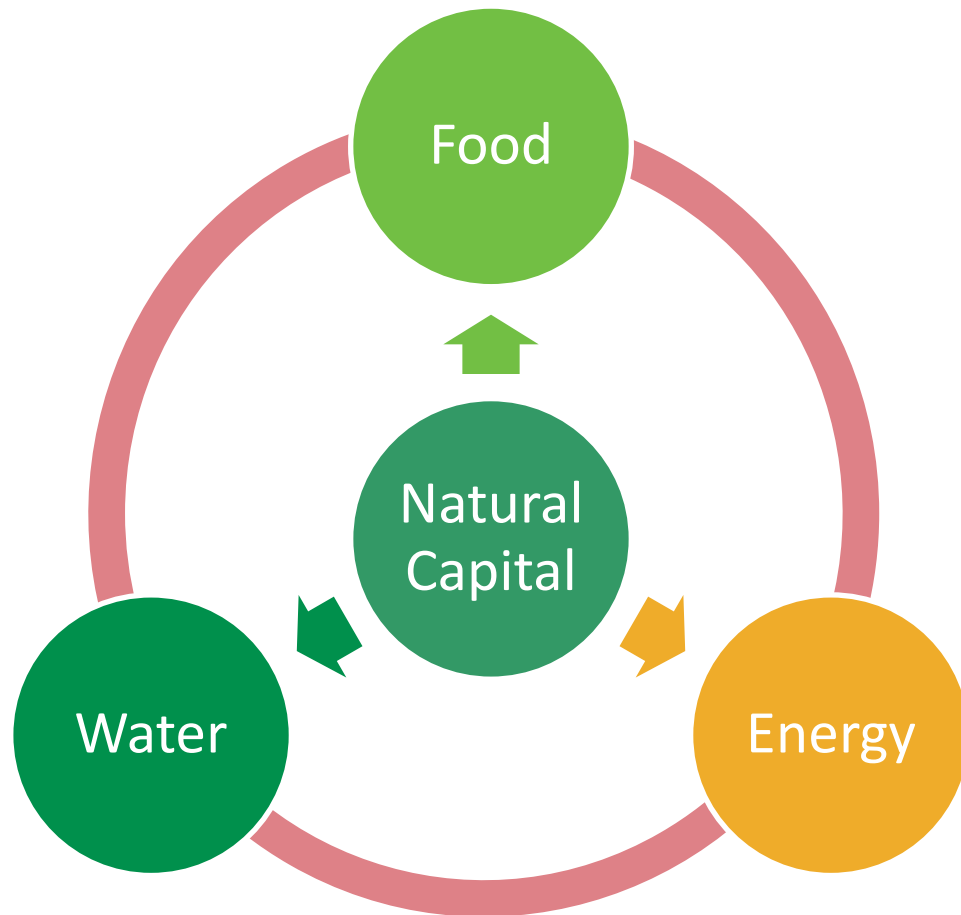
“poverty free and ecologically rich GMS ...”

realized by

“... green, inclusive and balanced economy”



Development context



GMS growth depends on natural capital ...

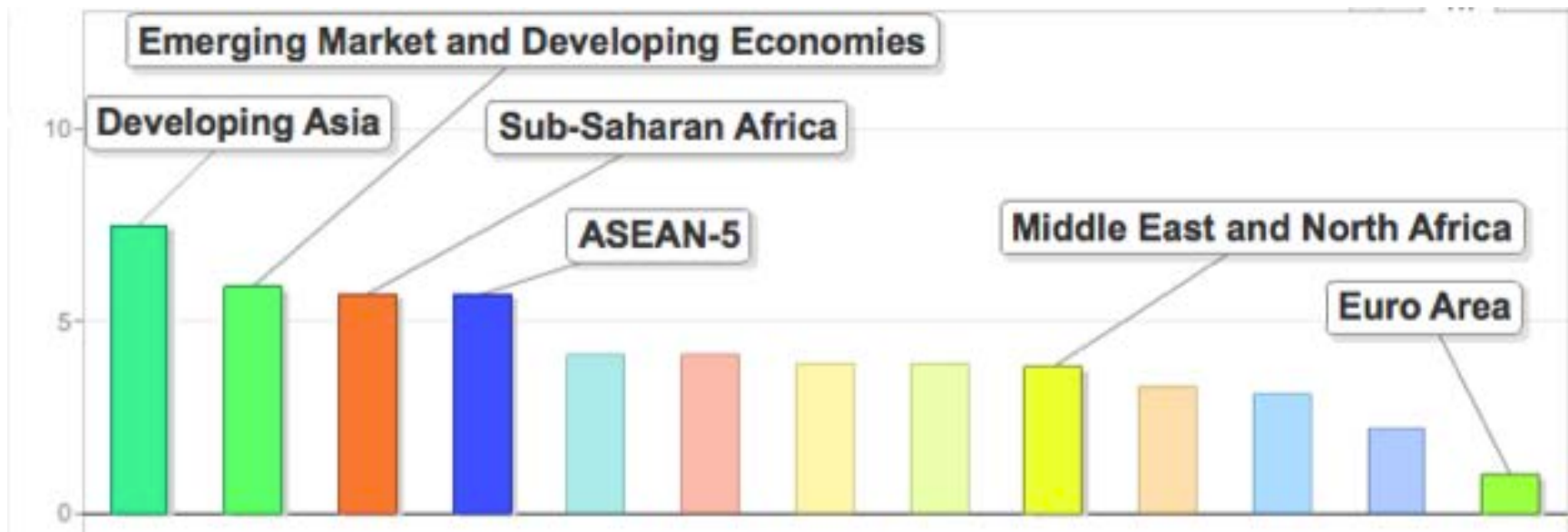
... sustainability depends on ability to manage increasing pressures



Development in Region

GMS is among consistently fastest growing economies in the world: 7.5% p.a.

GDP growth for major economies of world (% change)



Source: Global Finance 03-2014 [based on IMF, World Economic Outlook Database, 10-2012 with 01-2013 update]



Development impacts

CEP Phase I → Phase II:

Pressures/dependence on natural capital ↗

Environment & socio-economic trends in GMS

Indicators	2008	2009	2010	2011	2012
GDP US\$ billion at current prices	596	615	738.5	866	919
Poverty rate, %*	38	38	38	-	-
Forest cover, km ²	1,207,494	1,214,457	1,210,893	1,207,329	-
No. persons affected by natural disasters*	14,986,500	4,278,374	17,383,617	21,262,137	10,250,43
CO2 emissions from energy, MtCO2*	337	342	379	394	-
Electricity consumption, GWh	369,214	392,017	443,867	498,278	-

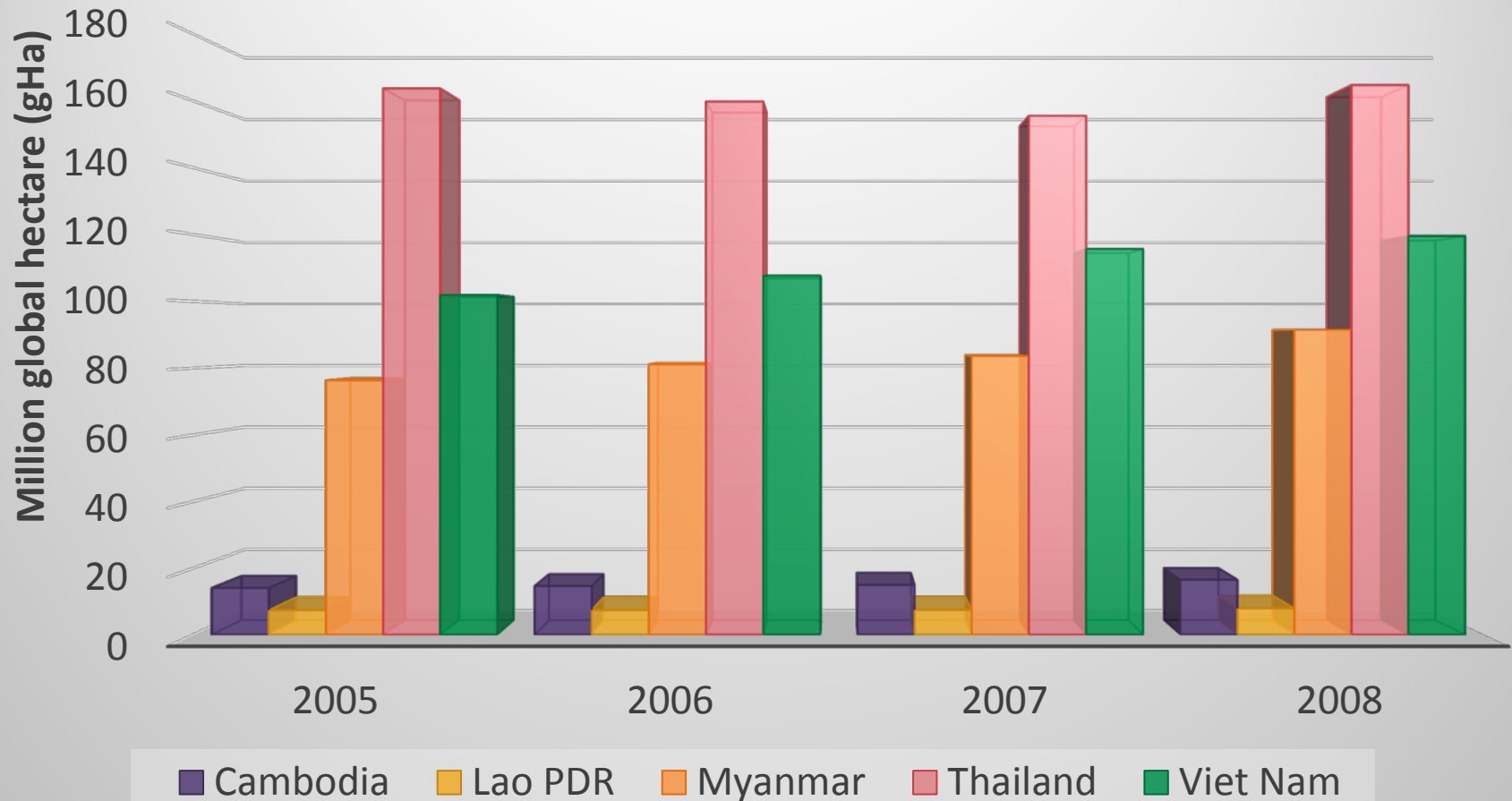
* Indicator does not include China



Development impacts

Ecological footprints in selected GMS countries

Source: Global Footprint Network



GMS ECP investments

Investments in Natural Capital (0.06%)

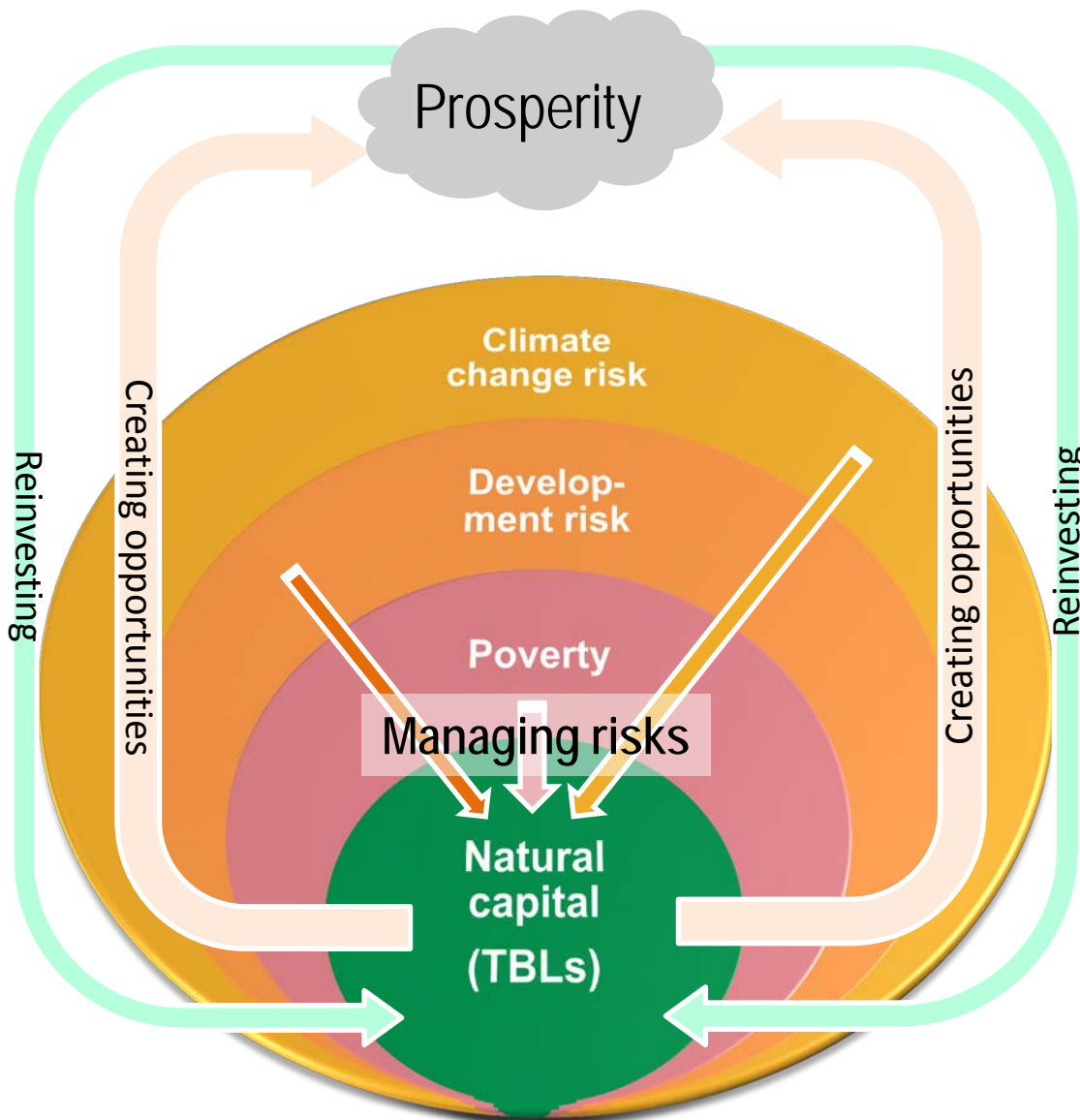
[GMS Economic Cooperation Program by end 2013]

Total investments > US\$ 16.6 billion

Pro-environment investments < US\$ 1.0 million

[Pro-environment investments are lower, at 5.9%, than in 2012 and 2011.]

CEP concept



- Secure natural capital (ecosystem assets and services)
- Optimize allocation of scarce resources and manage competition
- Enhance efficiency of supply chains based on scarce resources
- Improve inclusiveness and equitable benefit-sharing
- Promote integrated management of resources across international borders

Regional TBL Management Strategy

Regional/ National Multi-/Sectoral Planning



ADB

GREATER MEKONG SUBREGION CORE ENVIRONMENT PROGRAM

Multi-sector planning

Climate Change Assessment

Integrated water and energy planning

Climate Change Assessment

Landuse simulation

Economics of Natural Capital

TBL Assessment

Climate Change Assessment

Knowledge Management

CEP EIS

CC information system

Forest Cover Mapping



CEP TBLs

Focus on **biodiversity corridors** to reconnect fragmented habitats (including protected areas):

- Transboundary cooperation
- Conservation management
- Sustainable livelihoods
- Climate change



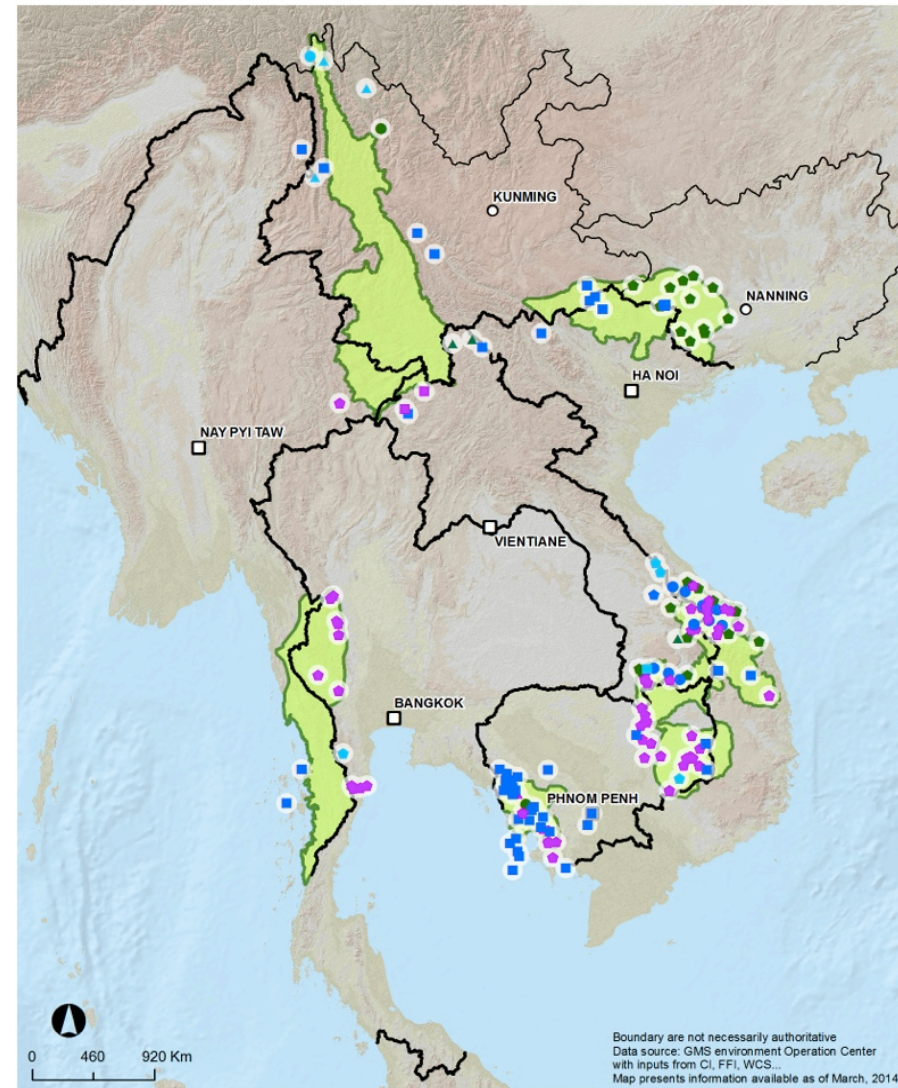
GMS TRANSBOUNDARY BIODIVERSITY LANDSCAPES





Partnership

- Many other players including government PA agencies, bi/multi-lateral agencies, NGOs
- Need for mechanism to share knowledge, develop common vision and collaborate synergistically
- Need to demonstrate that partners' investments are improving biodiversity and livelihoods within TBLs to attract new investments



Organization

● ADB	■ FFI	▲ KWF	◆ WCA	■ Transboundary biodiversity landscape
● CI	■ GIZ	▲ LBA	◆ World Bank	— National border
● EU	■ IUCN	▲ TNC	◆ WCS	— Province border (PR China)
● GEF	■ KFW	▲ UNDP	◆ WWF	



**GREATER MEKONG
SUBREGION
CORE ENVIRONMENT
PROGRAM**



Thank you

For further information

www.gms-eoc.com